



DESINTEC[®]
HYGIENE FOR STABLE AND ANIMAL



Effective measures against red mites!

- **Comprehensive concepts**
- **With long-term effects**
- **No resistances**



DESINTEC®

HYGIENE FOR STABLE AND ANIMAL



Effective control of red mites

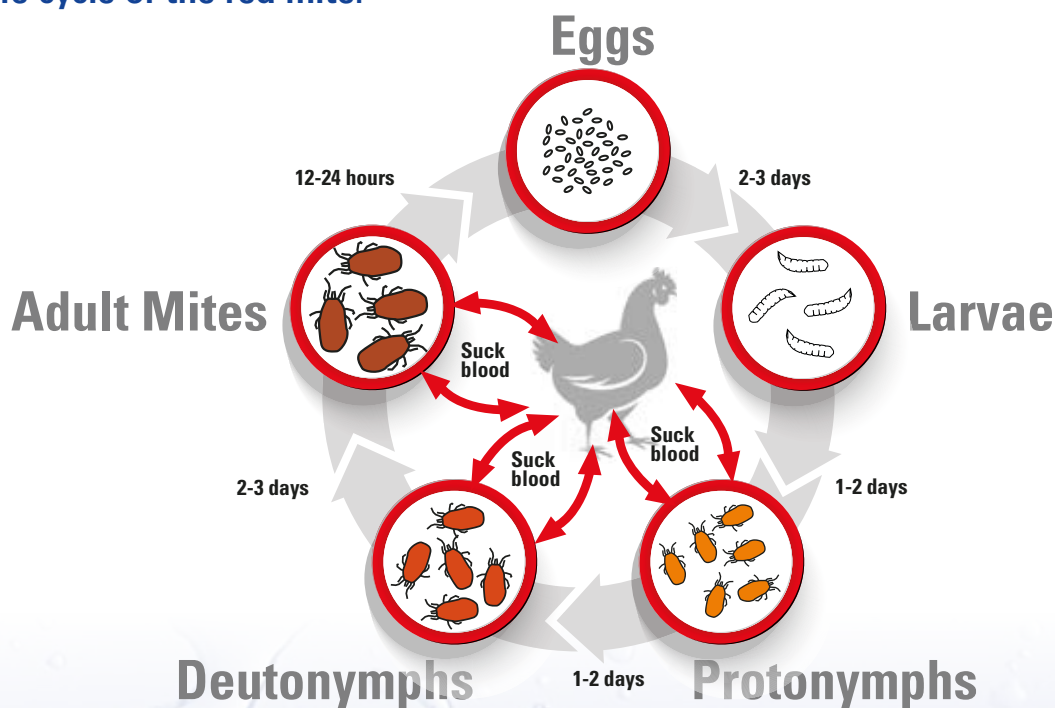


The control of disease-causing vectors is a key component for long-term success in poultry houses. The red mite is an often underestimated challenge. This ectoparasite is one of the most common and economically significant in the keeping of laying hens. The infestation and the resulting damage, such as disease transmission, blood loss, stress, reduced laying performance, lower egg quality, and even feather pecking, have a significant adverse effect on economic success.

The control of red mites offers many advantages:

- Improved animal health thanks to calmer animals
- Prevention of disease transmission by the mites themselves
- Better feed intake
- No feather-pecking and cannibalism
- Consistent laying performance thanks to reduced stress
- No eggs soiled with blood spots
- Improved working conditions for employees in the poultry houses

Life cycle of the red mite:



To achieve targeted control, it is important to have precise knowledge about the development of the red mite. The duration of the life cycle is directly proportional to the temperature and humidity, and under ideal conditions (>25 °C), it can be of less than seven days. As a result, especially in spring and summer months, a rapid rise in the population can be expected.



Control strategy in 3 steps



For successful control, beginning in the service period, several steps are required.

1.

1. Thorough cleaning

The foundation for effective control is laid with the thorough cleaning of the housing and all equipment and facilities in the service period. In doing so, it must be ensured that all of the hiding places of the mites are reached. If necessary, the equipment and facilities must be taken apart. The use of stall cleaners with a high pH value significantly improves the cleaning results and also represents a basic requirement for effective disinfection.

Alkaline foam cleaners with very good foam adhesion:

DESINTEC®

StallClean Basis:

Application concentration 3 – 5 %



DESINTEC®

StallClean Profi:

Application concentration 3 – 5 %



2.

2. Effective disinfection

When selecting the disinfectant, attention must be paid to which pathogens it works against. It is always necessary to disinfect against bacteria, viruses and fungi! In addition, if red mites are detected, they must also be controlled when disinfecting. In one single disinfection pass, **DESINTEC® FL-des Allround** can reliably eliminate red poultry mite eggs as well as bacteria, viruses, and fungi. This saves time!

DESINTEC®

FL-des Allround:

Application concentration 4.5 %



3.

3. Coating (application also possible when the housing is occupied)

After the facilities have been disinfected and dried, they are coated with **DESINTEC® M-Ex Profi 80**, **DESINTEC® M-Ex Pulver** or **DESINTEC® M-Ex RTU**.

The products contain synthetic amorphous silicon dioxide as an active substance. They have a physical effect and desiccate the red mites.



DESINTEC®
M-Ex Profi 80



DESINTEC®
M-Ex Pulver



DESINTEC®
M-Ex RTU





DESINTEC®

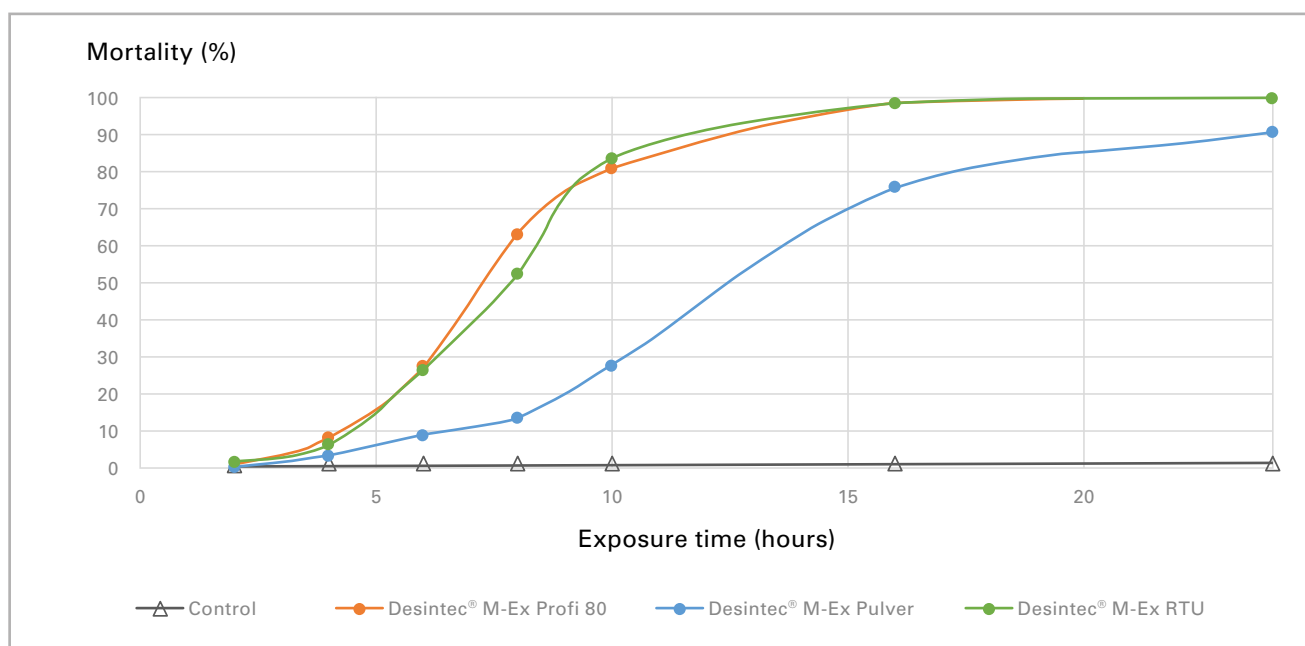
HYGIENE FOR STABLE AND ANIMAL



DESINTEC® M-Ex products



DESINTEC® M-Ex products causes a physical absorption of lipids on the epicuticle of the insects. The wax layer that protects the animals against desiccation is destroyed, and the targeted harmful insects are dehydrated and dry out. High relative humidities of 90 %, as encountered in poultry houses, do not affect the efficacy of the product. This has the advantage that parasites that only pupate or hatch out of eggs weeks later are also effectively eliminated.

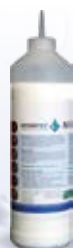


Wirkungsuntersuchung: Prof. Dr. Dr. Ulrichs, Humboldt-Universität zu Berlin, 2016.

Impact analysis:?



DESINTEC®
M-Ex Profi 80



DESINTEC®
M-Ex Pulver



DESINTEC®
M-Ex RTU



DESINTEC®

HYGIENE FOR STABLE AND ANIMAL



Mixing instructions



DESINTEC® M-Ex Profi 80

<p>1.</p> 	<p>Mixing technique:</p> <ol style="list-style-type: none"> Eibenstock EHR 14.1 Sk stirrer + intensive agitator (Collomix DLX-152/M14) Alternative: Power drill (750 W, ~1,000 rpm) + intensive agitator (Collomix DLX-152 HF) turned to 12.5 mm 	<p>5.</p> 	<ul style="list-style-type: none"> Stir intensively for 30 seconds
<p>2.</p> 	<ul style="list-style-type: none"> Fill 120–140 litres of clear water in a container 	<p>6.</p> 	<ul style="list-style-type: none"> DESINTEC® M-Ex Profi 80 needs to soak in the water Allow the mixture to rest for approx. 5–10 minutes (do not stir)
<p>3.</p> 	<ul style="list-style-type: none"> Add 1 bag of DESINTEC® M-Ex Profi 80 (15 kg of product) to the water in the container Carefully pull out the bag Avoid dust 	<p>7.</p> 	<ul style="list-style-type: none"> Stir intensively for approx. 30 seconds The product changes from a pulpy to a creamy consistency
<p>4.</p> 	<ul style="list-style-type: none"> Carefully stir in the product Stir for approx. 2–3 minutes <p>Note: Avoid dust – only actuate the agitator when it is under the powder layer</p>	<p>8.</p> 	<ul style="list-style-type: none"> Repeat steps 4–6 until the mixture is ready for use The product is ready for use when the surface is smooth <p>Caution! Stir briefly before transferring and after longer periods of standing</p>

Depending on the facilities system, a 15-kg bag of **DESINTEC® M-Ex Profi 80** (approx. 150-160 litres of ready-to-use suspension) is enough for approx. 1500-2500 hen places. This corresponds to approx. 65-100 ml of ready-to-use suspension / hen place.

Coating recommendations:

- All equipment and facilities, all mite hiding places (cracks, cavities)
- A 20-cm wide strip around the poultry house at a height of approx. 1 m, incl. windows, doors, ventilation, etc.
- All ceilings and walls





DESINTEC®

HYGIENE FOR STABLE AND ANIMAL



Cleaning and Disinfection



1.

Cleaning

DESINTEC® StallClean Basis

StallClean Basis is a high-alkaline (pH 12.5) liquid cleaner for animal stables/sheds and is especially suitable for removing stubborn dirt containing fat, protein and excrement from stone floors, tiles, wood, stainless steel, instruments, glass and plastics. StallClean Basis is not suitable for cleaning vehicles.

Packaging: 26 kg can and 260 kg drum



DESINTEC® StallClean Profi

StallClean Profi is a special, high-alkaline (pH 12.5) liquid foam cleaner for animal stables/sheds and is especially suitable for removing stubborn dirt containing excrement, fat and protein. StallClean Profi is particularly suitable for cleaning in abattoirs, cutting and processing facilities in the meat and fish industries and for removing smoke resin films in smoking plants. StallClean Profi is also recommended for the professional removal of complex impurities consisting of fat and protein and also limescale, particularly in dairies and the food and drink industry. StallClean Profi is not suitable for cleaning vehicles.

Packaging: 22 kg can and 230 kg drum



2.

Disinfection

DESINTEC® FL-des Allround

Surface disinfectant for bactericidal, virucidal, fungicidal, tuberculocidal and antiparasitic treatment in animal stables/sheds. FL-des Allround is a two-component preparation with which bacteria, mycobacteria (tuberculosis), viruses, fungus (toadstools) and parasitic dauer larvae (worm eggs, coccidian oocysts, cryptosporidium oocysts and mite eggs) are combated effectively in a single operation. The components A+B have a synergetic effect, i.e. they increase each other's effectiveness. FL-des Allround 2:1 premixture is suitable for disinfecting animal stables/sheds, installations and equipment. FL-des Allround is free of aldehydes. Important: Components A and B are applied only when combined with one another and in the ratio 2:1. Available on request

Packaging:

Comp. A: 10.5 kg can and

Comp. B: 6 kg can





Mite control



3.

Mite control

DESINTEC® M-Ex Profi 80

M-Ex Profi 80 is a powder which is suspendable in water in a ratio of 1:9 for combating pest insects, e.g. red fowl mites, cockroaches and ants, in free-range poultry farming, aviary farming, battery farming. It can be used in an occupied stables if applied properly. M-Ex Profi 80 brings about a physical adsorption of lipids from the insects epicuticula. The wax layer that protects the creatures from dehydration is destroyed and the pest insects being combated dehydrate, dry out.

Packaging: 15 kg bag



DESINTEC® M-Ex RTU

M-Ex RTU is a liquid, ready-to-use suspension for combating red mites (*Dermanyssus gallinae*) in poultry farms. The mechanism of action is based on a physical effect (dehydration of the mites). With appropriate use it can also be used in occupied stables. Shake up and apply with a backpack sprayer for example. One 10 liter packaging is sufficient for approx. 200 to 250 hen places.

Packaging: 10 liters



DESINTEC® M-Ex Pulver

M-Ex Pulver is a powder based on amorphous silicon dioxide for combating red mites. When used properly, it is possible for the use in occupied stables. M-Ex powder is suitable for dry, as well as for a liquid application. With dry application pay particular attention to cracks and crevices. For liquid application, mix 1: 3.5 with water and use conventional spraying techniques (backpack sprayer) for spraying on all common stable areas and facilities. Depending on the type of application, a 10 kg packaging is sufficient for approx. 500 to 1,000 hen places.

Packaging: 500 ml and 10 kg





DESINTEC®

HYGIENE FOR STABLE AND ANIMAL



DESINTEC® sales

Industrieweg 110 . D-48155 Münster

Telephone 0049 251 . 682-1144 . Fax 0049 251 . 682-2008

info-desintec@desintec.de

Use Biocides carefully. Always read the label and product information before use.